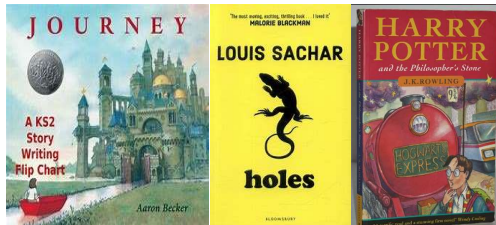


English

We will be reading a range of fiction and non-fiction texts, some linked to our History/Geography Themes, and others linked to our Grammar and Writing revision. At the beginning of Term 3, the whole school will be inspired by Aaron Becker's picture book Journey. Year 6 will then move on to Holes, a novel by Louis Sachar.

The Y6 English revision block is designed to provide a truly inspirational term's work. The children will be exploring the world of Harry Potter, starting with Harry Potter and the Philosopher's Stone. The unit is designed to cover all necessary grammar, punctuation and spelling for the Year 6 GPS SAT paper, as well as reading comprehension and writing activities. The unit will continue into next term



Humanities

Geography: In Term 3, the children will learn about Migration (human geography), analysing and comparing data from reliable sources and focussing on causes and consequences of migration, and particularly on climate refugees - we will look at the island nation of Tuvalu and how it is planning to build a digital version of itself in the metaverse, as rising seas threaten its existence.

History: In Term 4, the topic will be 'Journeys: The Story of Migration to Britain', based on the non-fiction book by Dan Lyndon-Cohen. The unit is designed as a thematic course looking at the big picture of migration to Britain over time. The children will look at a range of examples showing how Britain has always been a refuge for people escaping persecution, war and famine; by the end of the unit, they should be able to draw their own conclusion on the impact of migration on Britain.

RE

- **From Galilee to Jerusalem** (The Gospel of John)
- **Desert to garden** (from Ash Wednesday to the Sorrowful Mysteries of the Rosary)

In the next 3 branches, pupils will study the gospel of St John. In this gospel, John presents Jesus as the Messiah who reveals his kingdom through 7 signs. In the Bible, the number 7 indicates perfection. St John emphasises Jesus' divinity through his 7 'I am' statements that are reminders of the revelation of God as 'I am' to Moses in the burning bush (Ex 3:14).



Year 6 Spring Term 2024 Theme: Migration



RSHE

Module 2: Created to Love Others
UKS2 Module Two explores the individual's relationship with others. Building on the understanding that we have been created out of love and for love, this module explores how we take this calling into our family, friendships and relationships, and teaches strategies for developing healthy relationships and keeping safe both online and in our daily lives.

Maths - SAT revision - including:

- Fractions including decimals and percentages
- Ratio and proportion
- Measurement

Science

The children are completing their unit on Light at the moment.

They will then build on previous 'Living Things' learning by identifying the kingdoms of life and classifying living things within those kingdoms. The children will also be introduced to the Linnean system of classification and will be able to develop their practical scientific skills by investigating mould growth on bread and mushroom spore dispersal. This unit will be followed by 'Looking after the Environment', a series of lessons designed to complement the DfE's sustainability science curriculum.

Art/DT

The children will create paintings inspired by the disappearing island nation of Tuvalu - They will also investigate and analyse a range of existing tidal barriers and evaluate how they could be adapted to protect Tuvalu

In Computing, they will plan, develop and design items on TinkerCAD. For World Book Day, they will design and make their own hats and books.

Music

- Develop confidence in performance
- Appreciate and understand a wide range of high-quality live and recorded music drawn from different traditions and from great composers and musicians. Develop an understanding of the history of music/music and how migration has impacted British music

Computing

- 3d Modelling/TinkerCAD
- Data information and Spreadsheets

PE

- Real PE dance
- Tag Hockey

French

French will be taught in blocks, later on in the year and, as the children approach the end of their primary school, we will cooperate with Seaford Head and their French teacher.

Reminders and Additional Information

PE days are (usually): Wednesday & Friday

We consider our uniform to be a symbol that we are all part of the Anney Family and encourage all children to wear the correct school uniform at all times.

PE kits should be brought in at the beginning of the week and taken home at the end of the week to be washed.

A reminder that footwear should be smart black shoes, not boots or trainers.

Uniform reminder letters will be sent home if your child is not wearing the correct uniform. Adaptations are made in individual cases which will have been approved by Miss L. Brown and Mrs Crees.

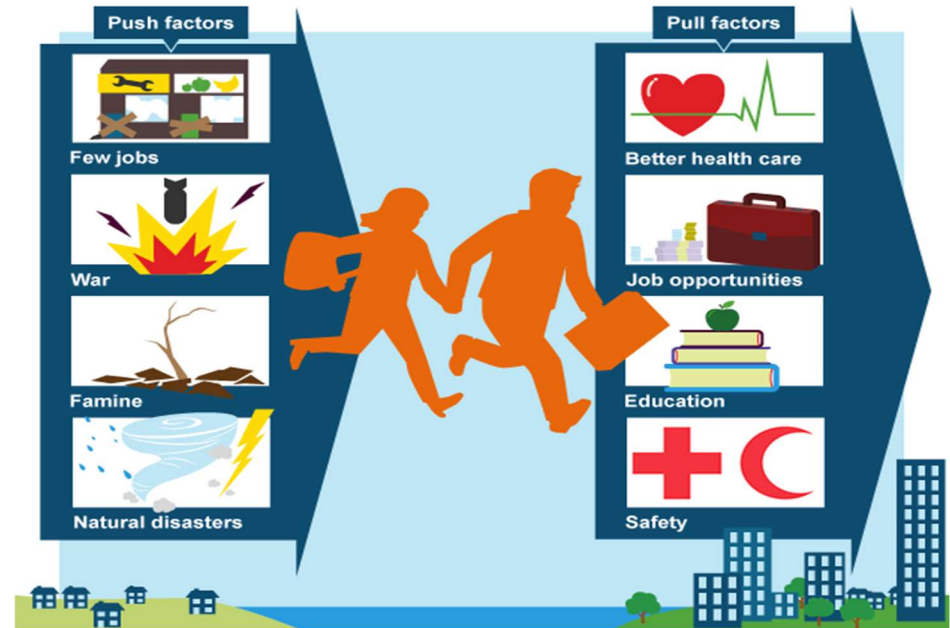
Homework

To support the children with their transition to secondary school, we have been sending home weekly homework. Some homework will take the form of SATs style questions and will support the children with their revision.

As I told the children, none of the homework is compulsory, however, completing some homework will not only help them academically, it will also stand them in good stead when they move on to secondary school. Children regularly completing their homework have been making notable progress, particularly in their Maths. If you have any particular concern about your child's learning, I am more than happy to prepare individual/personalised homework.

Children read regularly at school - they are also encouraged to use the main school library to borrow books to take home.

Year 6 - Spring Term Migration



[Migration - BBC Teach](#)

The Big Picture

What is migration?

Migration is the movement of people from one place to another. These people are called migrants. They might move to another town or city, or even to another country.

There are different reasons why people migrate, such as for work opportunities or to seek safety.

Migration is influenced by push and pull factors.

Migration of people can happen both between different countries, and within the same country. Migration can have a number of effects on both the host and source countries.